

L.M.E.A. Scales - Bassoon

♩ = 72 (minimum)

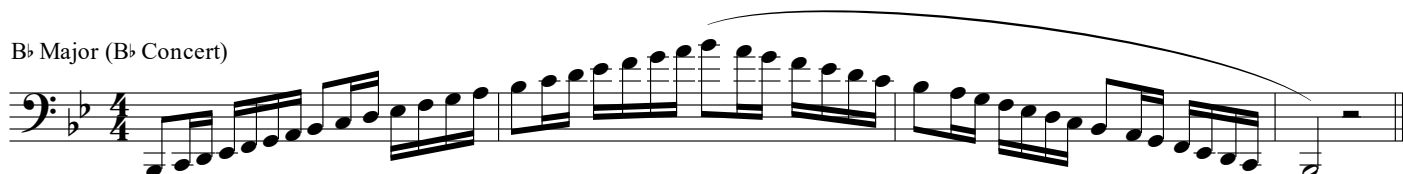
C Major (C concert)



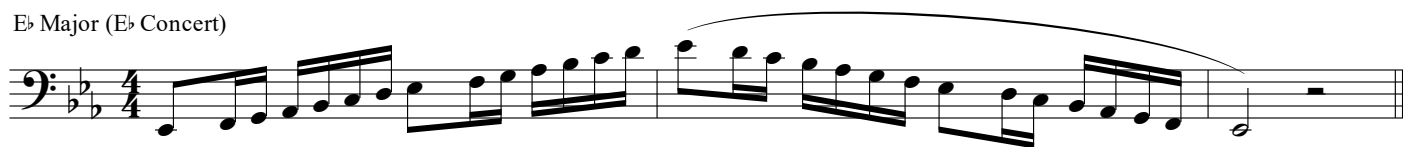
F Major (F concert)



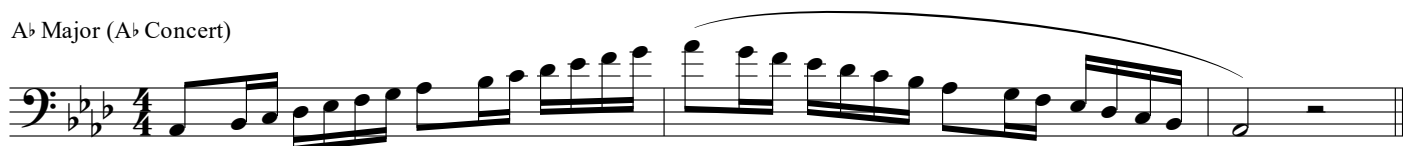
B♭ Major (B♭ Concert)



E♭ Major (E♭ Concert)



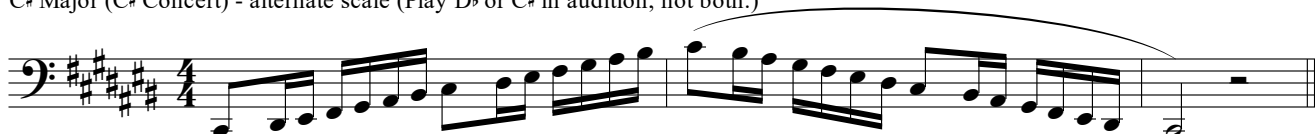
A♭ Major (A♭ Concert)



D♭ Major (D♭ Concert)



C♯ Major (C♯ Concert) - alternate scale (Play D♭ or C♯ in audition, not both.)



Bassoon

G \flat Major (G \flat Concert)

Musical notation for G \flat Major scale in bass clef, 4/4 time. The scale is written in a single line, starting on G \flat (B \flat 2) and ascending to G \flat 5. The notes are: G \flat , A \flat , B \flat , C, D, E \flat , F, G \flat . The scale is divided into two phrases by a slur, with a fermata over the final G \flat .

F \sharp Major (F \sharp Concert) - alternate scale (Play G \flat or F \sharp in audition, not both.)

Musical notation for F \sharp Major scale in bass clef, 4/4 time. The scale is written in a single line, starting on F \sharp (C \sharp 2) and ascending to F \sharp 5. The notes are: F \sharp , G \sharp , A, B, C, D, E, F \sharp . The scale is divided into two phrases by a slur, with a fermata over the final F \sharp .

C \flat Major (C \flat Concert)

Musical notation for C \flat Major scale in bass clef, 4/4 time. The scale is written in a single line, starting on C \flat (B \flat 1) and ascending to C \flat 5. The notes are: C \flat , D \flat , E \flat , F, G, A \flat , B \flat , C \flat . The scale is divided into two phrases by a slur, with a fermata over the final C \flat .

B Major (B Concert) - alternate scale (Play C \flat or B in audition, not both.)

Musical notation for B Major scale in bass clef, 4/4 time. The scale is written in a single line, starting on B (F \sharp 2) and ascending to B 5. The notes are: B, C \sharp , D, E, F \sharp , G, A, B. The scale is divided into two phrases by a slur, with a fermata over the final B.

E Major (E Concert)

Musical notation for E Major scale in bass clef, 4/4 time. The scale is written in a single line, starting on E (B \sharp 2) and ascending to E 5. The notes are: E, F \sharp , G, A, B, C \sharp , D, E. The scale is divided into two phrases by a slur, with a fermata over the final E.

A Major (A Concert)

Musical notation for A Major scale in bass clef, 4/4 time. The scale is written in a single line, starting on A (E \sharp 2) and ascending to A 5. The notes are: A, B, C, D, E, F \sharp , G, A. The scale is divided into two phrases by a slur, with a fermata over the final A.

D Major (D Concert)

Musical notation for D Major scale in bass clef, 4/4 time. The scale is written in a single line, starting on D (A \sharp 2) and ascending to D 5. The notes are: D, E, F \sharp , G, A, B, C, D. The scale is divided into two phrases by a slur, with a fermata over the final D.

G Major (G Concert)

Musical notation for G Major scale in bass clef, 4/4 time. The scale is written in a single line, starting on G (D \sharp 2) and ascending to G 5. The notes are: G, A, B, C, D, E, F \sharp , G. The scale is divided into two phrases by a slur, with a fermata over the final G.

Chromatic

Musical notation for chromatic scale in bass clef, 4/4 time. The scale is written in two lines, starting on C \sharp (F \sharp 2) and ascending to C \sharp 5. The notes are: C \sharp , C \sharp , D, D, D \sharp , D \sharp , E, E, E \sharp , E \sharp , F, F, F \sharp , F \sharp , G, G, G \sharp , G \sharp , A, A, A \sharp , A \sharp , B, B, B \sharp , B \sharp , C, C, C \sharp , C \sharp . The scale is divided into two phrases by a slur, with a fermata over the final C \sharp .