

L.M.E.A. Scales - Bass Trombone

♩ = 72 (minimum)

C Major (C concert)



F Major (F concert)



B \flat Major (B \flat Concert)



E \flat Major (E \flat Concert)



A \flat Major (A \flat Concert)



D \flat Major (D \flat Concert)



C \sharp Major (C \sharp Concert) - alternate scale (Play D \flat or C \sharp in audition, not both.)



Bass Trombone

G \flat Major (G \flat Concert)



F \sharp Major (F \sharp Concert) - alternate scale (Play G \flat or F \sharp in audition, not both.)



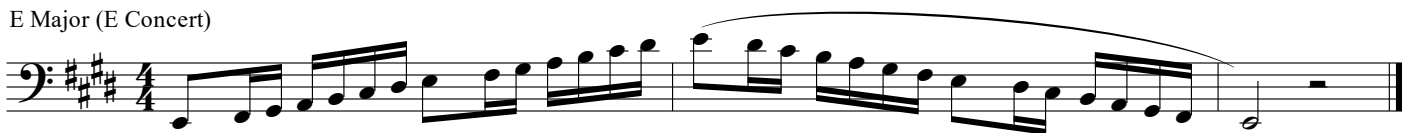
C \flat Major (C \flat Concert)



B Major (B Concert) - alternate scale (Play C \flat or B in audition, not both.)



E Major (E Concert)



A Major (A Concert)



D Major (D Concert)



G Major (G Concert)



Chromatic

