

CHROMATIC & MAJOR SCALES

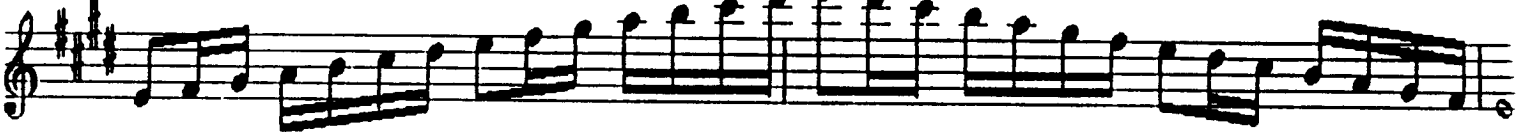
OBOE

Page 2

B Major Scale



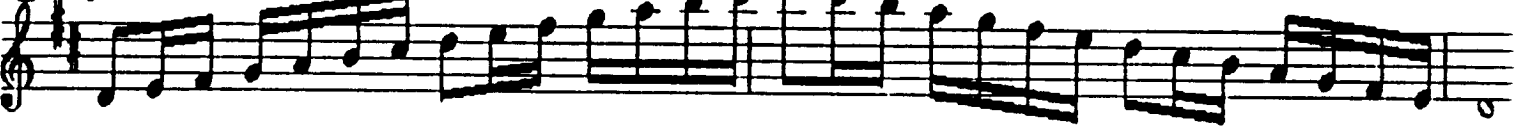
E Major Scale



A Major Scale



D Major Scale



G Major Scale



Chromatic Scale



1. Circled scales required for All-District every odd numbered year.
2. Non-circled scales required every even numbered year.
3. Chromatic scale required every year.
4. Tempo is (♩ = 72).
5. Rhythmic & Articulation Patterns must be adhered to.