

# CHROMATIC & MAJOR SCALES Bb LOW CLARINETS

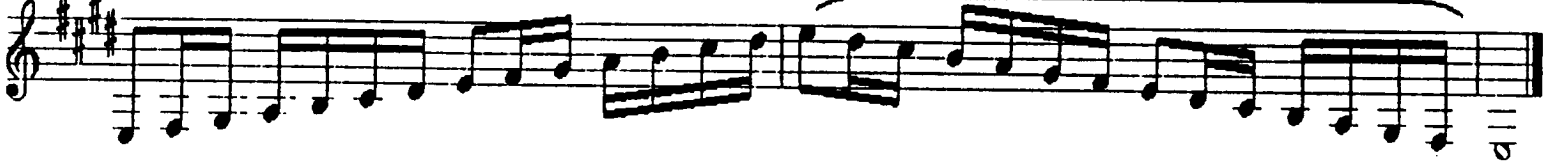
## Gb Major Scale (Concert E)



## B Major Scale (Concert A)



## E Major Scale (Concert D)



## A Major Scale (Concert G)



## Chromatic Scale



1. Circled scales required for All-District every odd numbered year.
2. Non-circled scales required for All-District every even numbered year.
3. Chromatic scale required every year.
4. Tempo is ( $\text{♩} = 72$ ).
5. Rhythm & Articulation Patterns Must Be Adhered To.